



America's Most Trusted Glazes™

Opalescents over Velvets



0-12/V-336

13 Glazes x 58 Underglazes x 8 Textured Slab Molds

Infinite Lowfire Possibilities

See more combos at amaco.com/opalescents-over-velvets

www.amaco.com/opalescents-over-velvets/



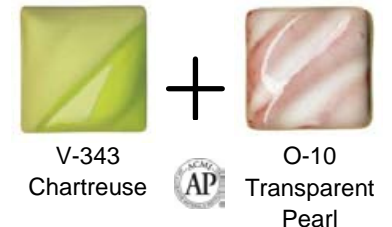
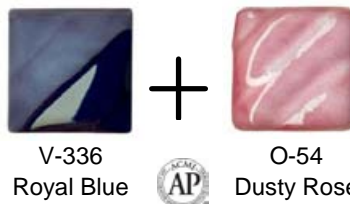
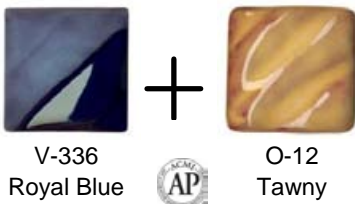
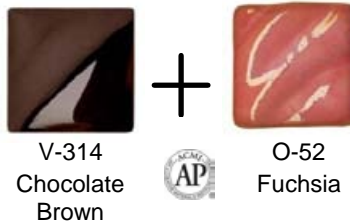
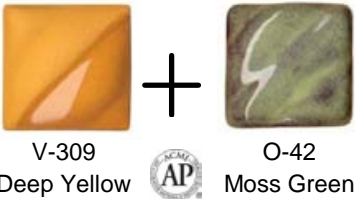
Opalescents OVER Velvets

The technique of utilizing a base layer of Velvet underglazes, covered with an Opalescent glaze, brings out the true beauty of the Opalescent glazes. The technique is simple yet offers some wonderful results. The process consists of making a form, which can be either vigorously and deeply carved, or very subtly carved, with a low fire clay (such as AMACO 20M or 25M) that is bisque fired to cone 04. The bisque fired piece is covered with a single good coat of the Velvet underglaze of choice, coated with 3 coats of the Opalescent glaze and glaze fired to cone 05. It is that simple of a process but the results are spectacular.

The artist needs to consider three key things in putting these combinations (which are numerous) together :

1. Depth and sharpness of carving: The deeper and sharper the carving, the Opalescent glaze will get thinner on the sharp edges and will pool more in the low spots. This will result in sharp and dramatic contrasts between the Velvets and the Opalescent. The sample patterns showing the Aztec design are examples of this type of effect. A softer and less abrupt carving will result in a soft more subtle transition from the Velvet to the Opalescent. The tiles with the fish are good examples of this look. Consider how deep to carve the surfaces depending on whether the surface will be vertical (pitcher) or horizontal (tile).
2. The artist must consider what Velvets will look good in contrast with Opalescent glaze. AMACO has 58 different Velvets that span the rainbow as far as color and shade. Try them all and let me know if you come up with a special combination by e-mailing me at slampron@amaco.com . We always want to show off what our extended family makes with our products.
3. The Opalescent glazes give very different looks and intensities of the contrasting opalescent layer. I will try to give some of my insights but certainly feel free to try them all.

- Steve Lampron, AMACO® Vice President of Technical Services

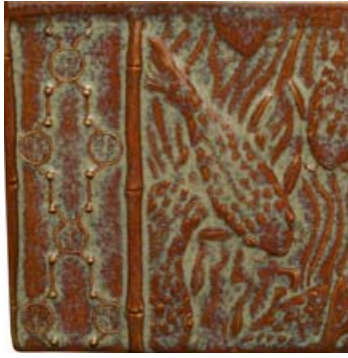




V-345
Light Green



O-10
Transparent
Pearl



V-345
Light Green



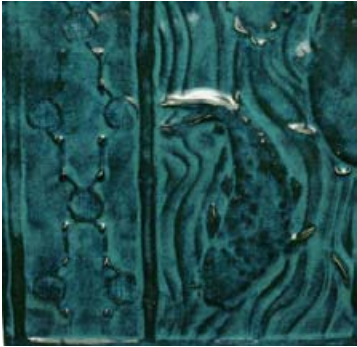
O-30
Autumn Leaf



V-353
Dark Green



O-10
Transparent
Pearl



V-353
Dark Green



O-26
Turquoise



V-357
Dark Gray



O-11
White Clover



V-370
Velour Black



O-10
Transparent
Pearl



V-370
Velour Black



O-30
Autumn Leaf



V-371
Rosy Mauve



O-26
Turquoise



V-375
Maroon

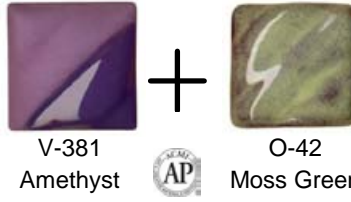
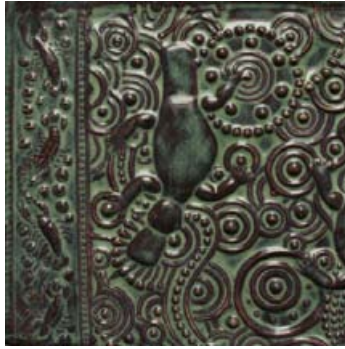


O-30
Autumn Leaf





V-381 Amethyst + O-20 Bluebell



V-381 Amethyst + O-42 Moss Green



V-384 Real Orange + O-57 Mottled Burgundy



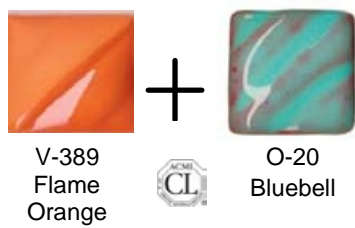
V-385 Cinnamon + O-26 Turquoise



V-385 Cinnamon + O-30 Autumn Leaf



V-391 Intense Yellow + O-52 Fuchsia



V-389 Flame Orange + O-20 Bluebell



V-390 Bright Orange + O-2 Black Tulip



V-387 Bright Red + O-20 Bluebell